

Technical Sheet

AFRICA JADE THALASSO HOTEL

2026





Africa Jade Thalasso Hotel is located in the village of Korba, in the heart of Cap Bon, 19 km from the city of Nabeul and 33 km from Hammamet. Historical sites, such as the Kélibia Fortress and Kerkouane, are also nearby. Tunis Airport is 90 km away, while Monastir Airport is 140 km away.

TECHNICAL DATA SHEET

Hotel Name: *Africajade Thalasso*

Category: 4 stars

Address: Av. Habib Bourguiba - 8070 Korba

Phone: +216 72 384 633

Fax: +216 72 385 353

Hotel Email: africajade@africajade.com.tn

Reservation Email: reservation@africajade.com.tn

Commercial Department:

Phone: +216 20 436 184

Email: commercial@africajade.com.tn / assistantecommerciale@africajade.com.tn

Languages spoken at the hotel: Arabic, English, French, German, Italian

Meal plans: Bed & Breakfast (BB) / Half Board (HB) / Full Board (FB) / All Inclusive (specific description)

Last renovation: Partial renovation in 2019



Customer Services



Luggage Storage

Fitness center

24/24 Reception

Car Parking

Meeting Rooms

Kids club

Laundry and Dry Cleaning Service

Outdoor pool and indoor seawater pool

Sun Loungers and Umbrellas

Private Beach of the Hotel

Wi-Fi available throughout the hotel, including all rooms

Accommodation:

The Africajade Thalasso Hotel offers 257 rooms, including 121 double rooms, 116 rooms with a third bed, 11 family rooms, 2 senior suites, and 7 junior suites. The rooms are equipped with a telephone line, a safe, free Wi-Fi access, satellite TV, a mini bar (consumables at an additional charge), a hairdryer, individual air conditioning or heating, a bathroom with a bathtub, sink, magnifying mirror, welcome products, and a private balcony or loggia.



STANDARD DOUBLE ROOM

The double rooms range from 25 to 32 m² and are equipped with double beds or large beds.

Number: 121

Size: 32 m²

Occupancy: Minimum 1 person / Maximum 2 persons

View: Garden / Pool / Sea



TRIPLE ROOM

The triple rooms have an area of 35 m² and are equipped with double beds or large beds plus an extra bed for the third person.

Number: 116

Size: 35 m²

Occupancy: Minimum 2 persons /
Maximum 3 persons

View: Garden / Pool / Sea



QUADRUPLE ROOM

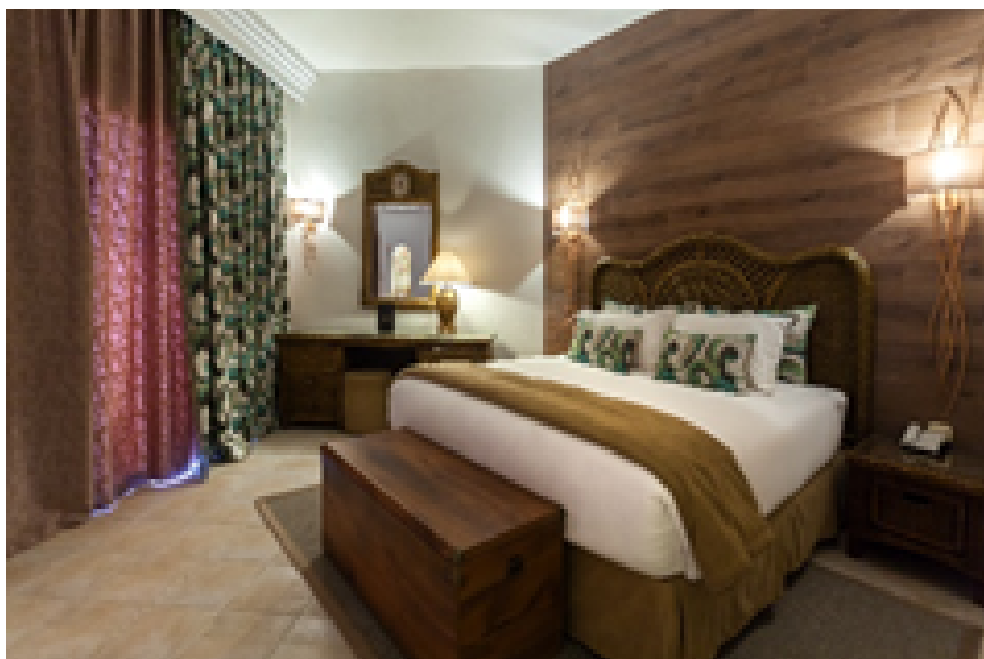
The quadruple room have an area of 40 m² and are equipped with a double bed or a large bed plus two single beds

Number: 11

Size: 40 m²

Occupancy: Minimum 4 persons /
Maximum 4 persons

View: Garden / Pool / Sea



SUITES

There are 9 suites in total, including 2 senior suites and 7 junior suites. They are equipped with double beds or large beds, plus a living room or a second bedroom.

Number: 09

Occupancy: Minimum 2 persons / Maximum 4
persons

View: Garden / Pool / Sea

Restaurant & Bars

The hotel offers a wide culinary variety. Whether at the buffet or à la carte, we feature a selection of innovative dishes that blend Eastern and Western cuisines. We prioritize local cuisine that respects the quality of the ingredients.

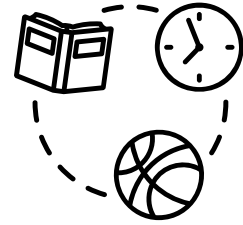
Breakfast, lunch, and dinner are served daily at the central restaurant "Mandesa," where your taste buds will be delighted with menus presented in buffet style, show-cooking, or themed evenings.

<p>MANDESSA RESTAURANT Is at your disposal every day from 07:00 to 10:00 / 12:30 to 14:30 (for ALL IN guests) / 19:00 to 22:00.</p>	<p>Number of Seats: 400 Meals: Breakfast, Lunch, Dinner Opening: Open year-round</p>
<p>THE NIGHTY RESTAURANT (THE COIN JADE) Is at your disposal year-round. Hours: 12:00 to 16:00 (October to April) 20:00 to 00:00 (year-round)</p>	<p>Number of Seats: 50 indoors and 40 outdoors Meals: Lunch, Dinner Menu Type: À la carte Opening: Open year-round</p>
<p>THE GRILL RESTAURANT Hours: 12:30 to 17:00 This restaurant features a terrace overlooking Outdoor Pool Also open during the summer season.</p>	<p>Number of Seats: 60 indoors and 100 outdoors Menu Type: À la carte Opening: From May 15 to october 30</p>
<p>FLAMINGO BEACH BAR RESTAURANT Hours: 12:30 to 17:00 Our restaurant is located on the beach, where the staff will welcome you for your lunches and dinners, delighting your taste buds throughout your stay</p>	<p>Menu Type: a la carte Opening: From May 15 to october 30</p>
<p>F & B MARKET (THE PECHEUR) Hours: 10:00 to 18:00 This restaurant is specially for all-inclusive guests and is located near the beach.</p>	<p>Opening: From May 15 to october 30</p>

<p>LOBBY BAR Hours: 09:00 to 00:00 The main bar, located at the hotel reception, welcomes you every day, year-round.</p>	<p>POOL BAR & FLAMINGO BEACH BAR The pool bar and beach bar are operational from 08:00 to 00:00 during the period from May 15 to October 30.</p>	<p>ALL IN POOL BAR The ALL IN Pool Bar is open daily from 08:00 to 00:00, from May 15 to October 30. Exclusively for ALL IN guests.</p>	<p>SPORT BAR The Sport Bar open all year from 16:00 to 00:00.</p>	<p>MOORISH CAFE Experience a different atmosphere while enjoying our mint tea and Turkish coffee. A variety of shisha is available at an additional charge. We welcome you from June 1 to September 30, from 16:00 to 00:00.</p>
---	---	--	--	---



Activities & Leisure



A fitness center is available for you, equipped with treadmills, exercise bikes, and free weights.

An **outdoor pool** of 1,225 m² is also at your disposal from 10:00 to 19:00.

The Thalassotherapy center is open from 10:00 to 19:00 on weekdays and from 10:00 to 22:00 on Saturdays.

The heated seawater pool is accessible from 10:00 to 19:00.

A fully equipped **mini-club** is available for children aged 4 to 12 years, operating from 10:00 to 12:00 and 15:00 to 17:00.

Amphitheater: Every evening, enjoy a different celebration and show presented by our entertainment team. From 21:00 to 21:30, there's a **mini disco**, followed by a show from 21:30 to 23:00 (sketches, lip-sync performances, musical comedies, dance shows, games without borders, etc.).

Beach: Enjoy a beautiful beach equipped with parasols and sun loungers. You can also take part in paid water activities such as jet skiing, banana boat rides, sea excursions, and more.

Wellness



The Thalasso Center, inaugurated in 2008, spans an impressive area of 4,000 m² and has a daily capacity of 100 guests. Open seven days a week, it welcomes visitors from 9:00 to 12:30 and 14h00 PM to 18h30 .

The center features a reception area, a robe dressing room, a boutique, and two changing rooms for clients (male and female), along with a doctor's office for consultations.

In the Hydrotherapy area, you will find three affusion shower rooms, three whirlpool baths, and a jet shower room, complemented by two wrapping rooms with heated blankets, a scrubbing and body wrapping room, and a foot bath room. The oriental hammam offers both hot and warm zones, while additional rooms are available for scrubbing and body wrapping. Guests can also enjoy an indoor pool equipped with a jacuzzi, a phlebological pathway, and swan neck showers, as well as a sauna for relaxation.

The Dry Treatment area includes a pressotherapy room and a dry floating bed room. For those seeking massages, there are seven massage rooms, an Ayurvedic massage room, a shiatsu room, and two outdoor cabins with breathtaking sea views.

The Relaxation area features a soothing relaxation room and a cozy herbal tea room. Meanwhile, the Beauty and Fitness area offers an aesthetics room, a hair salon, and a fitness room to cater to all wellness needs.

The center proudly uses "THALGO" products, ensuring a high-quality experience. At the beginning of your stay, you will meet with the center's doctor for a medical consultation to create a personalized wellness program tailored to your needs.

All hydrotherapy treatments (whirlpool baths, affusion showers, seaweed or mud wraps, exfoliation) are 20 minutes long. The reflexo-relaxation and phlebological treatments are 25 minutes each, while massages (relaxing, lymphatic drainage, slimming, abhyanga, shiatsu) last for 50 minutes.

Please note that a medical consultation is mandatory and payable on-site, costing approximately €12. Guests undergoing treatments enjoy unlimited access to the hammam, sauna, indoor pool, and gym throughout their stay.

Seminars & Meetings

We manage every detail to allow you to fully enjoy your event.

We offer 2 seminar rooms, depending on your needs and desired layout.

We also provide technical equipment, catering services, and coffee breaks to enhance your meetings and ensure the comfort of your teams.

We handle every detail to ensure you can fully enjoy your event.





USEFUL INFORMATION

Check-in: 2:00 PM

Check-out: 12:00 PM

A tourist tax of 12 DT per night per adult (from 12 years old) for a maximum duration of 7 nights is to be paid upon the guest's arrival.